

## PHILOSOPHY

### § Vision

CSI envisions to be a service-oriented policy research and advocacy institution that helps establish self-determining rural communities founded on equity, ecological sustainability, gender fairness, respect for people's rights and culture, and economic, socio cultural and political empowerment of marginalized rural sectors and peoples (i.e. Farm workers, small owner-cultivators, indigenous peoples, rural women, artisanal fishers, upland farmers and Moro communities)

### § Mission Statement

CSI steadfastly provides alternative analysis of rural development trends, proactively advocates policy reforms, and consistently works for the formation and generation of support for the broad alliance of sectors and peoples in the country, to empower marginalized rural sectors towards democratic, gender fair, just, culture-affirming, environment caring and self-determining communities.

### 2006-2008 BOARD OF TRUSTEES

**Bishop Benito Dominguez**  
*Chairman*

**Edward Vargas**  
**Timuay Alim Bandara**  
**Atty. Rene Sarmiento**  
**Maria Lourdes Mariano**  
**Rasma Ampuan**  
**Jaime Tadeo**  
**Amelita Balisalisa**  
**Fr. Cesar Aculan**  
**Jose T. Adorable, Jr.**  
**Fr. Pedro Salgado**

**Executive Director**  
**Romeo C. Royandoyan**

### Centro Saka, Inc.

Rm. 321, PSSC Building, Commonwealth Avenue  
Diliman, Quezon City • Tel. 926-6607 Fax. 928-7464  
email: [operations@centrosaka.org](mailto:operations@centrosaka.org) • [www.centrosaka.org](http://www.centrosaka.org)



## PROFILE

Centro Saka, Inc (CSI) or the Philippine Center for Rural Development Studies, is an SEC-registered, non-profit, non-government organization.

Established in September 2005, CSI is engaged primarily in policy research, policy advocacy, networking, capability building and economic linking work on agrarian reform and rural development issues, in partnership with people's organizations.

It targets as audience the marginalized rural sectors\* (via publications and campaigns) and policy makers responsible for rural development policy (via policy advocacy and lobbying). It also undertakes media advocacy to generate broader awareness and support for people's initiatives for agrarian reform and rural development.

Basically, CSI operates through a network of more than 500 small farmer organizations scattered all over the Philippine Archipelago. CSI has regional liaison officers tasked with forming linkages with local small farmer organizations as well as initiating and facilitating local advocacies. CSI's networking is done through direct initiatives and through collaborative efforts with allied organizations.

### Who are the marginalized rural sectors?

Farm workers, small owner-cultivators, indigenous peoples, rural women, artisanal fishers, upland farmers and Moro communities.



## WE SPECIALIZE IN

### Policy Research

We undertake in-depth researches about policies and issues affecting small agricultural producers, and publish the results for mass consumption.

### Policy Advocacy and Lobbying

We lobby legislators and policy-makers to pass laws and policies favorable to small farmers and block legislation that do the opposite.

### Campaigns

Together with like-minded groups, we launch and undertake strategic information and mass mobilization campaigns to popularize and gain public support for small farmer advocacies

### Development Linkages

Apart from providing opportunities for policy dialogues, we design economic empowerment programs for our partners and clients, and then link them with service providers .



## § Goals

### ✧ Steadfastly provide alternative analysis of rural development trends

- Institutionalized policy research and advocacy program, which provides up-to-date and comprehensive information and data on burning issues affecting the marginalized rural sectors;
- Published annually information on agrarian reform, rural women, agriculture and rural development;
- Operationalized an information-sharing service to rural sectors;
- Upgraded capability of CSI's resource center

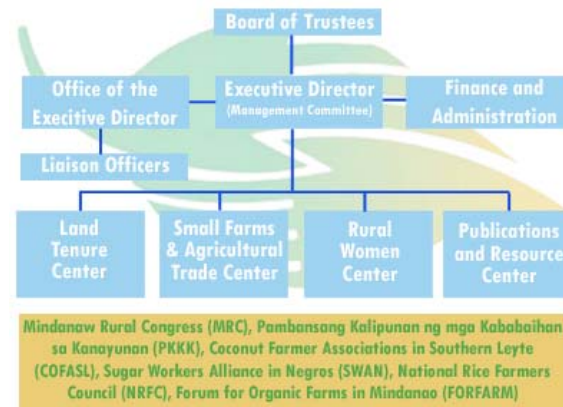
### ✧ Proactively advocate policy reforms

- Formulation and advocacy of policy reform agenda on asset distribution, smallholder and rural women empowerment, sustainable rural development, and (WTO) trade liberalization in the agri sector, to address government policies that are detrimental to the marginalized rural sectors;
- Institutionalization of assistance for the indigenous peoples towards reclaiming ancestral domains and recovery of tribal justice and governance;

### ✧ Consistently work for the formation and generation of support for the broad alliance of sectors and peoples

- Major commodity leagues and sectoral alliances operationalized at the local and national levels...
  - ⊕ Strengthen existing commodity leagues and alliances
  - ⊕ Create new commodity leagues
  - ⊕ Intensify linkages between and among existing and new commodity leagues
  - ⊕ Support and coordinate with existing fisherfolk organizations
  - ⊕ Increase rural women's participation in all commodity leagues
- Undertaken programs and projects aimed at rural economic empowerment and development.
  - ⊕ Collate and disseminate information on alternative farming technologies and best practices
  - ⊕ Design and publish posters and other popular reading materials
  - ⊕ Provide project development assistance and link service providers to local partners of CSI

## § Organizational Structure



### MAJOR ADVOCACIES

- Completion of the agrarian reform program.
- Protection of small agricultural producers from the onslaught of trade liberalization.
- Development of small farms
- Economic and political empowerment of marginalized rural sectors (i.e. small farmers, agricultural workers, indigenous peoples, Moro peoples, rural women, and artisanal fishers).
- Mainstreaming of gender issues in all development spheres.
- Recovery of the coconut levy.

## § Partners

- Alyansa Agrikultura
- Pambansang Kalipunan ng mga Kababaihan sa Kanayunan (PKKK)
- National Rice Farmers' Council (NRFC)
- Sugar Workers Alliance Negros (SWAN)
- Mindanao Rural Congress (MRC)
- Coconut Farmer Associations in Southern Leyte (COFASL)